



## EXPANDED SERVICES

FORMA has expanded our services to include new projects in the Central California Coast, economical 3D mapping services, and our Smart Map Studio.

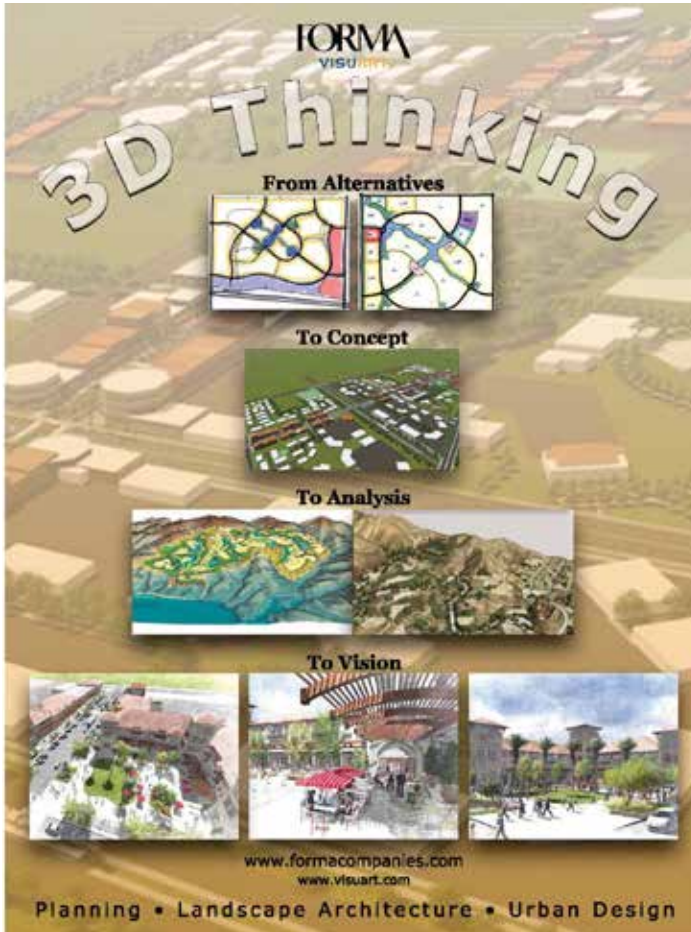
### Central Coast

FORMA welcomes Frances Romero as a Team Leader of the Central California Coast team. Frances is expanding FORMA's multidisciplinary role in the Central Coast environs and adds a special skill in project management. Her role as a planner at FORMA focuses on entitlements, town planning, community outreach, government relations, wireless telecom, and land development management.

Among Frances' many abilities, she has dedicated time to serve her community as the Mayor of the City of Guadalupe, elected in 2012. Her path to City Council was encouraged by friends who know her to be an action oriented leader and a problem solver. She is also a Director with the Santa Barbara County Association of Governments (SBCAG), a regional planning agency comprised of five County Supervisors and all eight incorporated cities within the county. SBCAG is responsible for distribution of local, state, and federal transportation funds and acts as a forum for addressing regional and multi-jurisdictional issues.

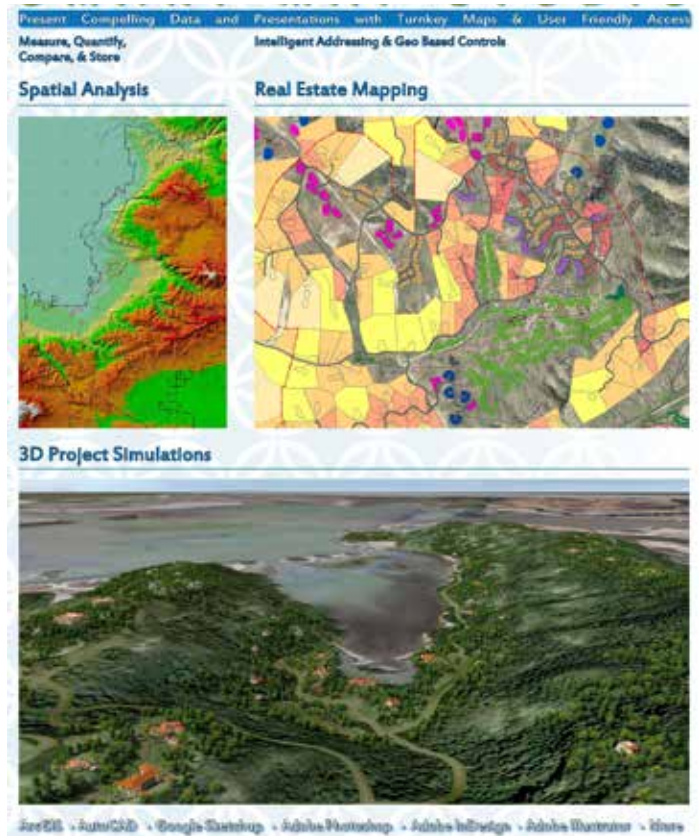
Frances is a loving wife of technology professional Dean Romero. They enjoy their motor home and hope to share it and their home with a rescued German shepherd dog in the coming year. Frances is also a jewelry artist, and serves of the Board of Directors of the Dunes Center, which promotes the conservation and restoration of the Guadalupe-Nipomo Dunes ecosystem through education, research, and the support of cooperative stewardship. She views land use as a consensus process supported by open dialogue and understandable information.





## 3D Thinking

Technology has expanded at FORMA to allow a 3D view of the entire process as projects mature from concept to final design. The “new” feature is that 3D mapping and drawing is quick and supported by graphic templates in mass quantities. 3D has always been here but it was expensive. No longer!



## Richard Maxwell Earns His Landscape Architect's License

Richard has been working as a successful Project Manager / Landscape Designer for many years and has now achieved licensure within the State of California.

Richard continues to manage multiple projects concurrently, from conceptual design through construction documentation and construction administration. Richard collaborates on team-based development of creative technical solutions for complex design problems for FORMA's clients.



Several of Richard's projects have been recently constructed, including Avenswood at Rosedale in Azusa; the Newport Avenue Class I Bike Trail in Tustin; and the Truwind models in Huntington Beach.

## Smart Map Studio

Long a hallmark of FORMA's services and capabilities, the enriched Smart Map Studio (SMS) is being expanded with new technologies. Lora Tonjes is known by her clients to produce amazing results with mapping and data. Real Estate's value is made by how much information is available. SMS focuses on making cognitive data in accessible formats and with accuracy, including 3D presentation capabilities.

## PROJECTS

Fivepoint Communities is building the Great Park Neighborhood in collaboration with many designers, of which FORMA was one.

FORMA's Landscape Architecture team designed the entry and rear yard landscape for the Pulte Homes Hawthorne models. The design takes advantage of California's temperate climate by welcoming the outdoors in and expanding livable space.

The Great Park Neighborhoods is a planned community with innovative design features and unique timeless "Americana" flavor. Models are open now.

Please view this video of our staff tour at Great Park Neighborhoods. If you like, share it with your friends and associates! <https://vimeo.com/83328527>



## Hawthorne Model Park

FORMA's team provided the design for this gazebo, a public seating area between the model homes.



## Hawthorne Model

Pulte Homes' Hawthorne model home front entry and rear yard were designed by FORMA's Landscape Architecture team.



# inFORMAtion Newsletter

## Additional FORMA Landscape Architecture Projects

Below are images and links to other model home projects that have recently opened.



**Brookfield Homes - Palmetto at Rosedale**

<http://brookfieldsocal.com/palmetto-at-roosedale>

**William Lyon Homes - Willow Bend in Irvine**



**Christopher Homes - Wisteria at Rosedale**

<http://www.livewisteria.com/>

**William Lyon Homes - Atrium in San Diego**

<http://lyonhomes.com/southern-california/atrium>



**TriPointe Homes - Tamarind at Rosedale**

<http://www.tripointehomes.com/Community-Tamarind-Lane-at-Rosedale-7.cfm>



Welcoming outdoor seating with space-frame trellis and built-in barbeque takes advantage of our beautiful climate.

**TriPointe Homes - Avenswood at Rosedale**

<http://www.tripointehomes.com/Community-Avenswood-at-Rosedale-22.cfm>

**Christopher Homes - Pacific Shores in Huntington Beach**

<http://www.pacificshoreshb.com/villas>

## Aliso Viejo Town Center Vision

FORMA is finishing a “Town Center Vision” for City of Aliso Viejo’s commercial district. It is a unique approach of presenting a dramatic list of options that the City will embrace in order to allow commercial businesses to expand beyond conventional retail performance.



F O R M A designed the entry for the Aliso Viejo Town Center.

Scan the QR code or follow this link to view a video of FORMA’s Town Center vision.

[http://bit.ly/AV\\_TownCenter](http://bit.ly/AV_TownCenter)



## Desert Dunes Design

A desert community striving to reinvent itself with a full-service resort that expands its historic golf lifestyle.

*Desert Dunes 3D Concept Plan*



## Adelanto General Plan Update

The proposed Adelanto North 2035 Plan provides the focused framework to update the City's General Plan in order to address State planning priorities requirements, foster sustainable and green development, and provide for balanced land use alternatives addressing housing and employment opportunities.

FORMA is assisting the City of Adelanto vision its future with dramatic 3D Creations of what "could be."



*Activity Street*



*Civic Center - Town Hall and Farmer's Market*



*Town Center*

## Laguna Hills Urban Village

FORMA assisted the City in its renaissance of its commercial core by designing dramatic hardscape elements that make a statement. This particular area is home to the refurbished Laguna Hills Civic Center in which the landscape setting was designed and implemented by FORMA, the Laguna Hills Mall, and a number of area restaurants and retail businesses.



Laguna Hills Civic Center and Urban Village  
Laguna Hills, California

Civic Center and Streetscape Revitalization  
FORMA



**Seating and shade trellises at the Laguna Hills Civic Center Forecourt**



**Majestic Phoenix dactylifera flank the stacked stone gateway monuments.**